



Saltoun Road, Brixton, SW2

1 bedroom flat - purpose built for sale

£360,000

Leasehold

Property Details

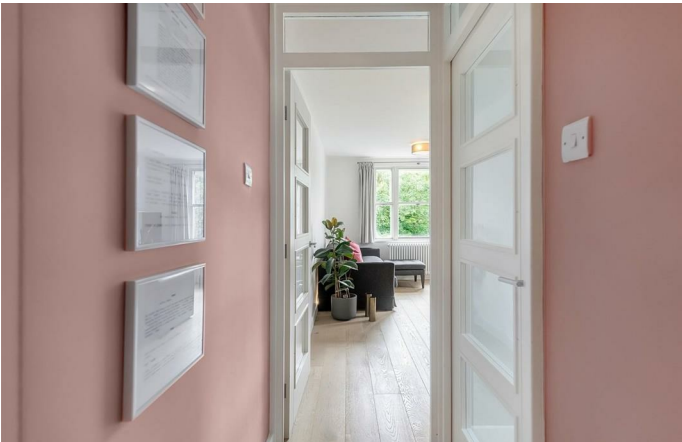
The bedroom is a generous double room with plenty of space for storage and two windows that flood the apartment with sunlight. The separate reception at the front of the building is a great size with lovely solid wood engineered flooring and ample space to dine, relax and entertain. The dual aspect windows have lovely views over the communal gardens, St. Matthew's church and the tree line on Windrush Square. A well-designed, contemporary kitchen has all you might need in terms of mod cons and conveniently sits adjacent to the living room. The apartment is complimented by a beautifully finished bathroom with a digital walk-in shower, adding to the luxury feel of this perfectly located one bedroom home. Last but not least the property has ample built in storage, communal gardens and access to an off street car park. The apartment is perfect for anyone who wants to be close to the action, situated in the centre of Brixton's cultural hub - just around the corner from Windrush Square, The Ritz and POP Brixton. The wonders of trendy Brixton Village are next door and purchasers will be able to sample the culinary delights of a different nation's cuisine every day.

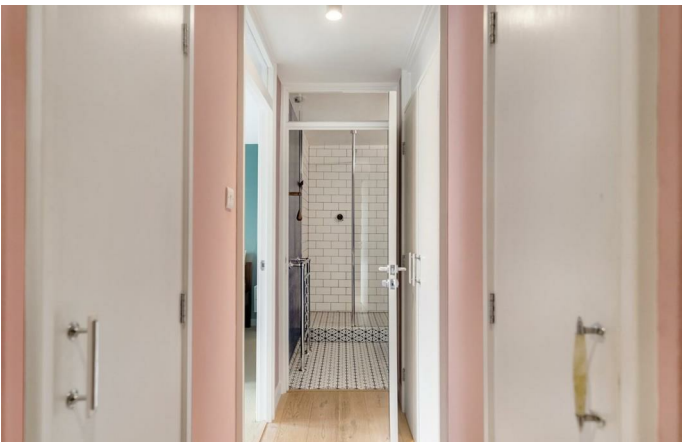
Features

- One double bedroom
- Secure purpose built building
- Bright and airy atmosphere throughout
- High standard of fixtures and fittings
- Nearly 550 square feet of internal living space
- Secondary double glazing throughout
- Communal gardens
- Access to an off street car park
- Nestled in the heart of Brixton, moments from Brixton Village and the tube station
- Short stroll to Brockwell Park

Council tax band B

EPC rating C (77)



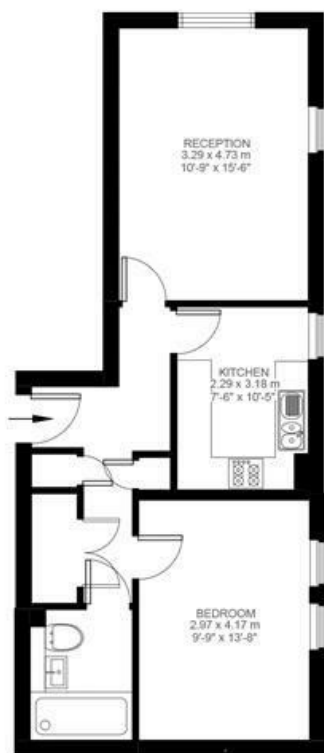


Saltoun Road, Brixton, SW2

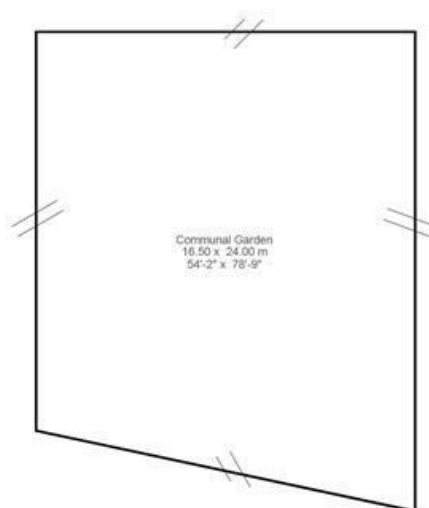
Saltoun Road, Brixton, SW2

1 Bedroom Flat

Approximate internal area: **544 sqft 51 sqm**



Third Floor



While we do try our very best, floor plans are produced as a guide only and we take no responsibility for the precise accuracy with which any property is represented.

Saltoun Road, Brixton, SW2

